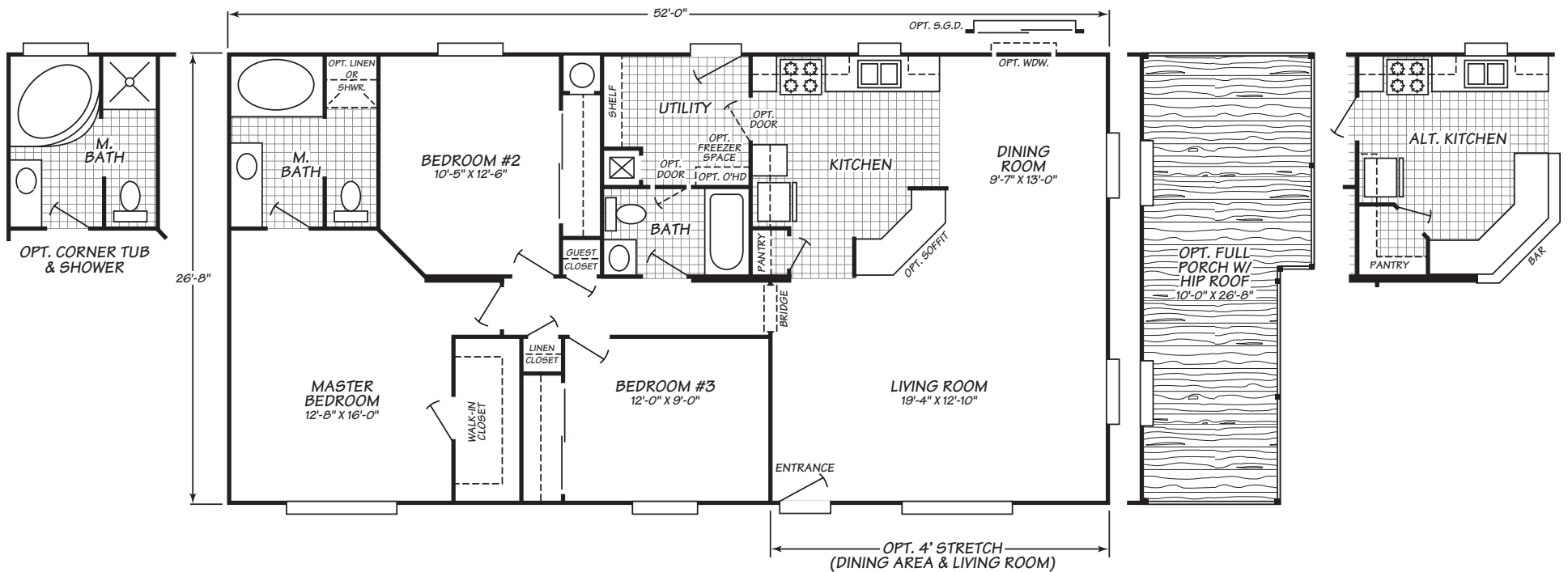


Festival Series Model 4523D

3 Bedrooms • 2 Baths • 1,386 Square Feet



Fleetwood Homes reserves the right to change colors, prices, specifications, models, dimensions and materials without notice. Rendering and diagrams are meant to be representative and, in keeping with Fleetwood's policy of constant updating and improvement, may vary from the actual home. All dimensions are nominal and approximated. Square footage is measured from exterior wall to exterior wall, and is an approximate figure. Length indicated in floorplans is floor length only. The length of the hitch is not included. (Add four feet to arrive at transportable length.) Ask your retailer for specifics. PRICES AND SPECIFICATIONS SUBJECT TO CHANGE WITHOUT NOTICE OR OBLIGATION.

Interior

Tape & Texture with Painted Walls Finished, textured drywall enhances home appearance-choose from range of paint colors

Generously Sized Windows Provide natural light in your home

Cathedral Ceilings Throughout your home provide a feeling of spaciousness

Decorative Glass Light Fixtures Durable and attractive, adds an appealing detail to room lighting

Walk-in Closet Large, well-lit clothing storage closet has space for entire wardrobe (selected models-see floor plans)

Vinyl Tile Entry Way Easy to care for, durable vinyl stands up to wear in this high traffic area and protects carpets

100% Nylon Carpet Stylish, durable and easy to clean

Exterior

2X6" Exterior Wall Frames, 16" on Center Additional structural strength while providing an increased R value of R19

36"X80" Exterior Doors Extra-wide entryway for improved access

Architectural Shingles Long-lasting & attractive-projects a custom home appearance (7704R Only)

Cemplank® Siding Durable, low maintenance, and trusted brand

18' Roof Dormer Adds a custom home exterior detail for a traditional residential feel

2X6" Floor Joists on 16" Centers Provides a stable foundation throughout the home

Transverse Floor Construction True basement style floor system features full width lumber and fully supported decking

Bath

42" Full-Length Vanity Mirrors Designer home detail offers head to toe reflections (master bath)

Banjo Countertop in Guest Baths Space-saving countertop design, ideal for health & beauty products

Oversize Tub with Shower in Master Bath Perfect for comfortable soaking or a refreshing shower

Tile backsplash for vanity Ceramic tile backsplash protects surfaces and adds designer details

Towel Bar & Tissue Holders Ready to move in with the convenience of towel and tissue placements

Kitchen

Raised Panel Hardwood Cabinet Doors Long-lasting and beautiful, enriches the appearance of kitchen cabinets

Cityscape Cabinets Spacious, durable, and appealing design with a custom kitchen style

30" Overhead Cabinets Convenient, accessible storage with lined adjustable shelves for kitchen equipment & supplies

Kitchen Cabinet Crown Molding Generous crown moldings enhance cabinets

Solidsides Cabinet System Is The Best in The Business Features solid 3/4" cabinet sides for superior strength, adjustable shelving in base and overhead cabinets for versatility, heavy duty hidden hinges for years of use, and face frameless construction for easy access and a sleek look

18 Cubic Foot Frost Free Refrigerator By Whirlpool provides ample storage from a brand you trust

Lined Cabinets Lined cabinets are easier to clean and storage ready

Ceramic Tile Backsplash Provides attractive protection for your walls

Utilities, Safety & Energy

Energy Star Insulation Package Energy Star maximizes heating, cooling, and power savings through energy efficiency

50 Gallon Water Heater Abundant hot water supply for laundry, bath, and kitchen

200 Amp Electrical Panel Box Designed and installed for safety, easy access and ample household capacity

Dual Pane Vinyl Windows Easy to clean, low maintenance, and helps to lower power bills

Utility Shut-Offs Quickly shut off water and gas for repairs or in an emergency

Options

Appliance Option Package Add or upgrade brand name appliances to suit any taste

Capstone by Moen Faucet Upgrade Features the famous quality and beauty of Moen

Raised Panel Hardwood Cabinet Doors Are durable and stylish. They are available in Dunthorpe Alder, Knotty Alder, and Oak.

Laminate Flooring Upgrade Tough, long-wearing laminate flooring available in appealing designer colors

4/12 Roof Pitch Enhances your homes curb appeal

Deluxe Carpet Upgrade Luxurious, heavier weight carpet in designer colors

Molding Upgrade Package Upgrade enhances moldings throughout home

Gas Fireplace Provides ambience and warmth