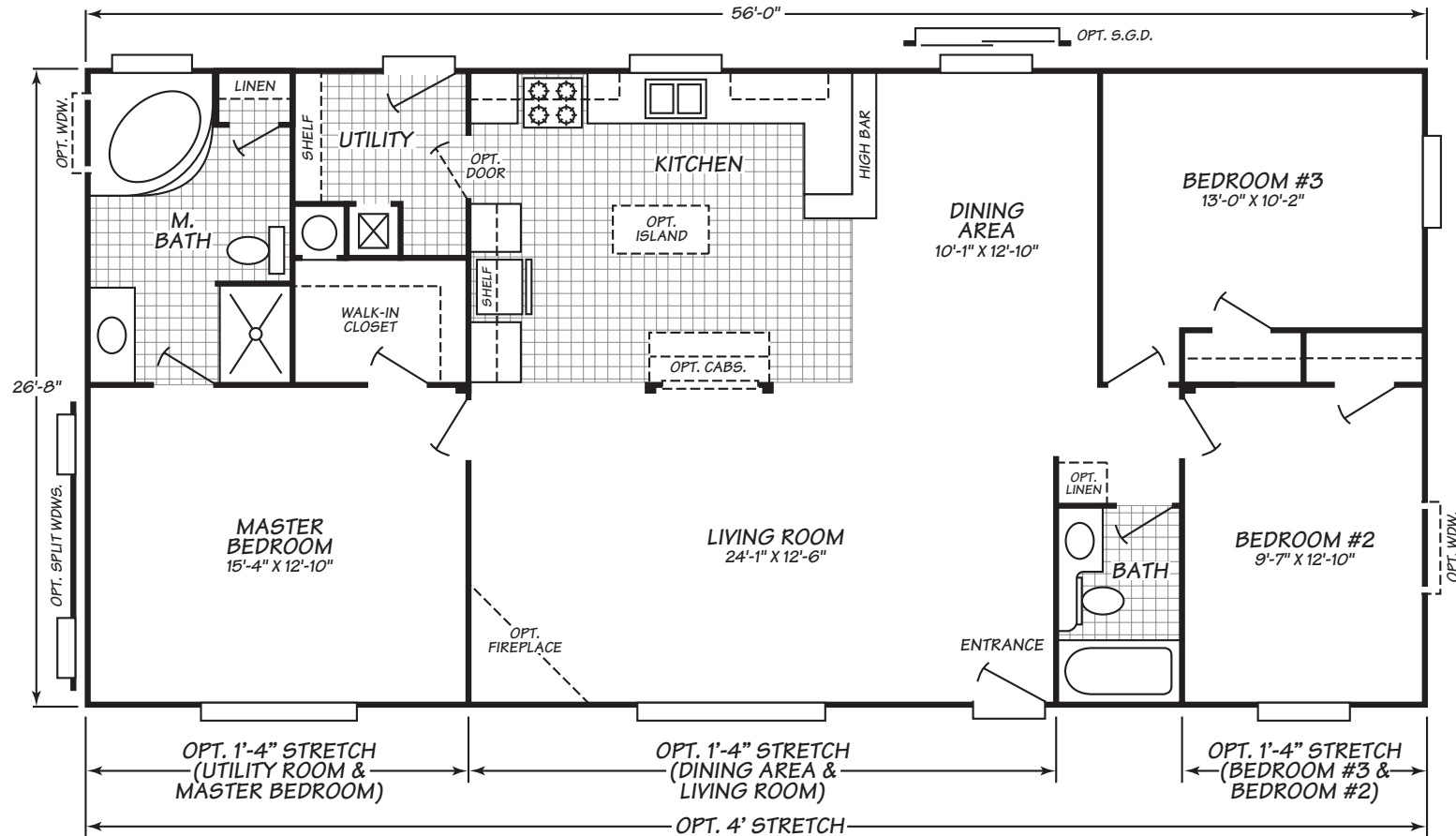




# Stone Creek Series Model 4563S

3 Bedrooms • 2 Baths • 1,492 Square Feet



Fleetwood Homes reserves the right to change colors, prices, specifications, models, dimensions and materials without notice. Rendering and diagrams are meant to be representative and, in keeping with Fleetwood's policy of constant updating and improvement, may vary from the actual home. All dimensions are nominal and approximated. Square footage is measured from exterior wall to exterior wall, and is an approximate figure. Length indicated in floorplans is floor length only. The length of the hitch is not included. (Add four feet to arrive at transportable length.) Ask your retailer for specifics. PRICES AND SPECIFICATIONS SUBJECT TO CHANGE WITHOUT NOTICE OR OBLIGATION.

**Interior**

**Tape & Texture with Painted Walls** Finished, textured drywall enhances home appearance-choose from range of paint colors

**Generously Sized Windows** Provide natural light in your home

**Cathedral Ceilings** Throughout your home provide a feeling of spaciousness

**Decorative Glass Light Fixtures** Durable and attractive, adds an appealing detail to room lighting

**Washable Vinyl Finish Walls** Inside pantry and closets are easy to maintain

**Walk-in Closet** Large, well-lit clothing storage closet has space for entire wardrobe (selected models-see floor plans)

**Vinyl Tile Entry Way** Easy to care for, durable vinyl stands up to wear in this high traffic area and protects carpets

**100% Nylon Carpet** Stylish, durable and easy to clean

**Exterior**

**2X6" Exterior Wall Frames, 16" on Center** Additional structural strength while providing an increased R value of R19

**36"X80" Exterior Doors** Extra-wide entryway for improved access

**94" Living Room Window** Fills room with dramatic natural light and enhances custom home appearance (most models)

**Cemplank® Siding** Durable, low maintenance, and trusted brand

**2X6" Floor Joists on 16" Centers** Provides a stable foundation throughout the home

**Transverse Floor Construction** True basement style floor system features full width lumber and fully supported decking

**Bath**

**42" Full-Length Vanity Mirrors** Designer home detail offers head to toe reflections (master bath)

**Banjo Countertop in Guest Baths** Space-saving countertop design, ideal for health & beauty products

**Deluxe Bath** With separate tub and shower provides for luxurious soaking or a cleansing shower

**Drop-in bathtub** Attractive, custom home style bathtub in master bath

**Tile backsplash for vanity** Ceramic tile backsplash protects surfaces and adds designer details

**Towel Bar & Tissue Holders** Ready to move in with the convenience of towel and tissue placements

**Kitchen**

**Cityscape Cabinets** Spacious, durable, and appealing design with a custom kitchen style

**30" Overhead Cabinets** Convenient, accessible storage with lined adjustable shelves for kitchen equipment & supplies

**Cabinet Doors with Raised Panels** Solid and beautiful, easy to maintain

**18 Cubic Foot Frost Free Refrigerator** By Whirlpool provides ample storage from a brand you trust

**Lined Cabinets** Lined cabinets are easier to clean and storage ready

**Adjustable Overhead Cabinet Shelves** Maximizes storage options

**Ceramic Tile Backsplash** Provides attractive protection for your walls

**Utilities, Safety & Energy**

**200 Amp Electrical Panel Box** Designed and installed for safety, easy access and ample household capacity

**Zone 3 Insulation Package** Maximizes heating, cooling, and power savings through energy efficiency

**Dual Pane Vinyl Windows** Easy to clean, low maintenance, and helps to lower power bills

**Utility Shut-Offs** Quickly shut off water and gas for repairs or in an emergency

**Options**

**Energy Star Insulation Package** Energy Star maximizes heating, cooling, and power savings through energy efficiency

**Appliance Option Package** Add or upgrade brand name appliances to suit any taste

**Capstone by Moen Faucet Upgrade** Features the famous quality and beauty of Moen

**Raised Panel Hardwood Cabinet Doors** Are durable and stylish. They are available in Dunthorpe Alder, Knotty Alder, and Oak.

**Laminate Flooring Upgrade** Tough, long-wearing laminate flooring available in appealing designer colors

**4/12 Roof Pitch** Enhances your homes curb appeal

**Deluxe Carpet Upgrade** Luxurious, heavier weight carpet in designer colors

**Gas Fireplace** Provides ambience and warmth

**Stone Creek Value Packages** Ask your retailer about these outstanding values available on Stone Creek only